

# the world's leading shopfront design software



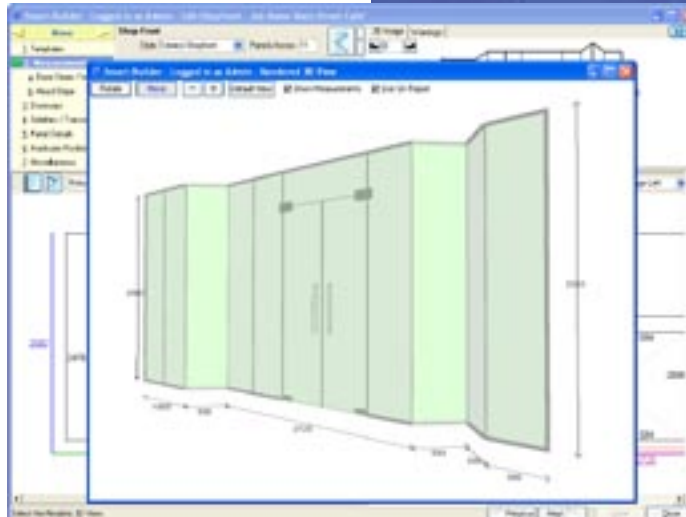
## Smart-Shopfront product guide

Smart-Shopfront builds upon the success of Smart-Shower by providing a complete design system for frameless glass shopfronts and internal partitions. A full range of hardware and architectural features are supported including patch, rail and side hinged doors, fins, transoms, nib walls, notches, corners and rakes.

The beauty of Smart-Shopfront is how flexible and responsive it is. As you drag new panels into position, alter measurements or change your mind about closer or locking methods, Smart-Shopfront automatically recalculates everything, adjusting the complete hardware list and glass details based on your selections and preferences. It couldn't be easier!

### Did you know?

- The first release of Smart-Shopfront was in 2003.
- Smart-Shopfront hardware is automatically rebuilt in response to any changes you make.
- Multiple entranceways can be entered into a single shopfront design.
- Glass orders can automatically reference and attach template drawings for complex cut-outs.
- You can easily build a library of completed shopfronts to copy and modify for ultra fast design.
- The Smart-Builder range of software is the only suite of integrated products designed specifically for the frameless glass industry.



○ Save Time

○ Quote More

○ Less Errors

○ Gain Control

[www.smart-shopfront.com](http://www.smart-shopfront.com)

or ph: +44 (0) 207 372 0736 e: [info@smart-builder.com](mailto:info@smart-builder.com)

# the world's leading shopfront design software



## Why Smart-Shopfront?

The key benefits which we hear time and time again are:

**Speed of quoting** - Quoting can be a very time consuming exercise, yet it is essential to maintain a healthy flow of work. Unfortunately, firing back quick but inaccurate quotes is not the answer. Quote too high and a competitor gets the job, quote too low and you could well lose money on the job. Smart-Shopfront solves this by allowing you to design and cost a complete shopfront so quickly that there is no excuse for not knowing the exact glass and hardware costs expected. The fact that the resulting quote also looks so professional with a computer drawn 3D representation of the shopfront is the icing on the cake.

**Compatible hardware** - Shopfront hardware can be complicated with different rules for closers working with patches and rails, keepers for locks, left and right oriented patches and more. Designing a shopfront can seem to involve more referencing hardware manuals than actual design. By encapsulating these rules into its hardware database Smart-Shopfront automatically takes care of these rules allowing you to do your job without getting bogged down in manuals.

**Save on glass** - Toughened glass is expensive and the tolerances required for frameless shopfronts can be tight. The cost of unusable glass is a significant one. Smart-Shopfront eliminates wastage by taking care of the glass size calculations for you and producing detailed glass order drawings at the touch of a button. No more issues with deducting the wrong clearance, cut-outs not lining up, or forgetting a cut-out.

**Record keeping** - Have you ever had a customer call up and give the go ahead for a quote you can't even find any more? Or maybe a panel of glass gets broken and a new one needs to be sent out for installation - how do you know what size the panel was without going out and remeasuring? Smart-Shopfront solves both problems by keeping a complete record of all shopfronts you have quoted or installed.

- Design your shopfronts within Smart-Toolbox to gain even greater benefits, including glass order tracking, installation scheduling, invoicing, and more.
- Fully customisable and usable with any hardware range - Smart-Shopfront contains full maintenance screens for adding new hardware as your business evolves.
- Available standalone, networked or over the internet.
- Full UK based support.

"Our company has used the software for ten years now and the savings in glass errors, time and money have been phenomenal. We see it as a vital tool for any owner who wants to grow their business. It has been the unsung hero of our installation business"

Robert Famularo, *Director*  
Euroglass Systems Ltd



The Smart-Builder software suite.

[www.smart-shopfront.com](http://www.smart-shopfront.com)

or ph: +44 (0) 207 372 0736 e: [info@smart-builder.com](mailto:info@smart-builder.com)